

RAK19007 Water Resistant Case Assembly Guide

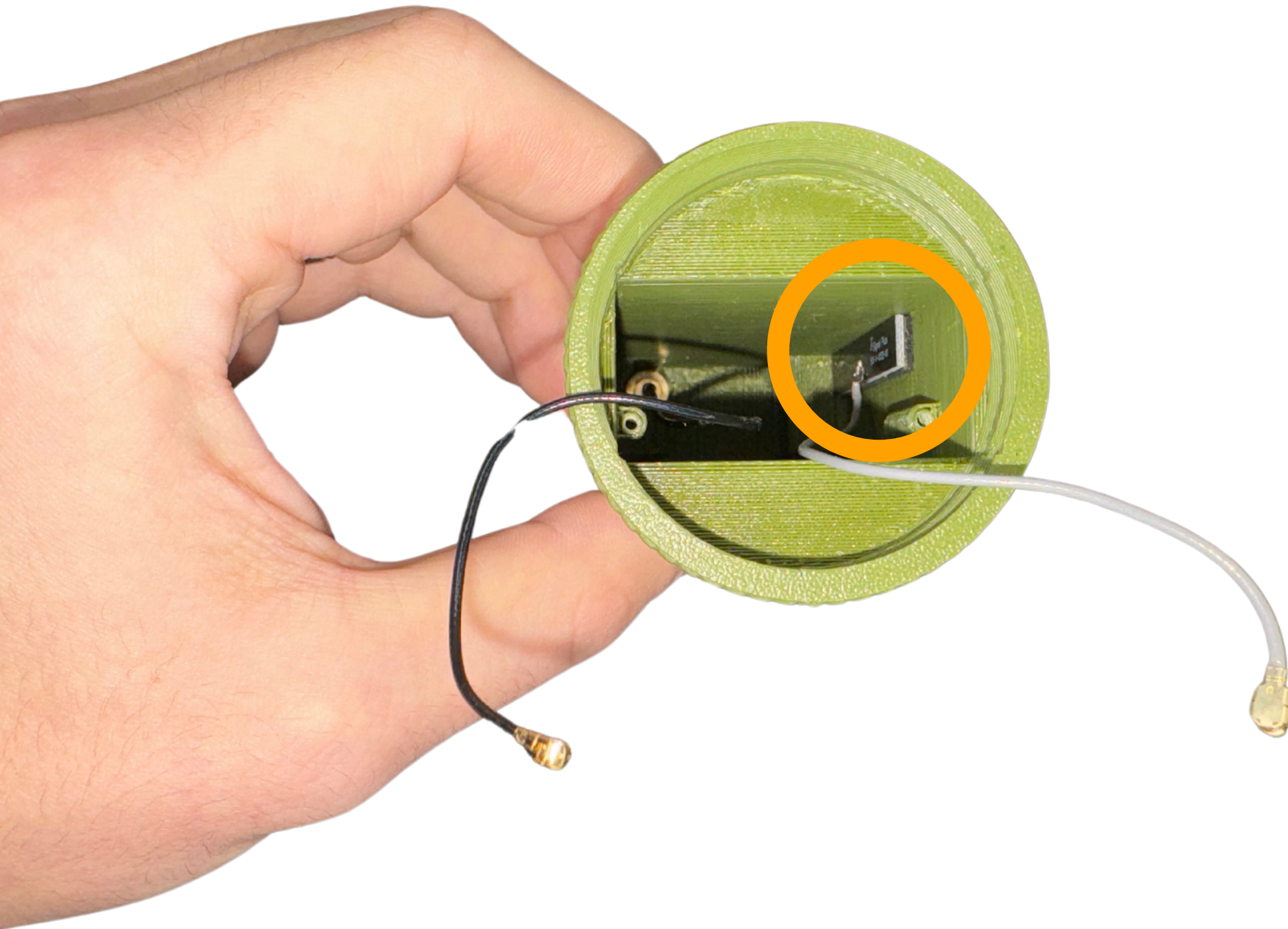
Requires:

- Phillips Screwdriver
- RAK Meshtastic kit mounting hardware

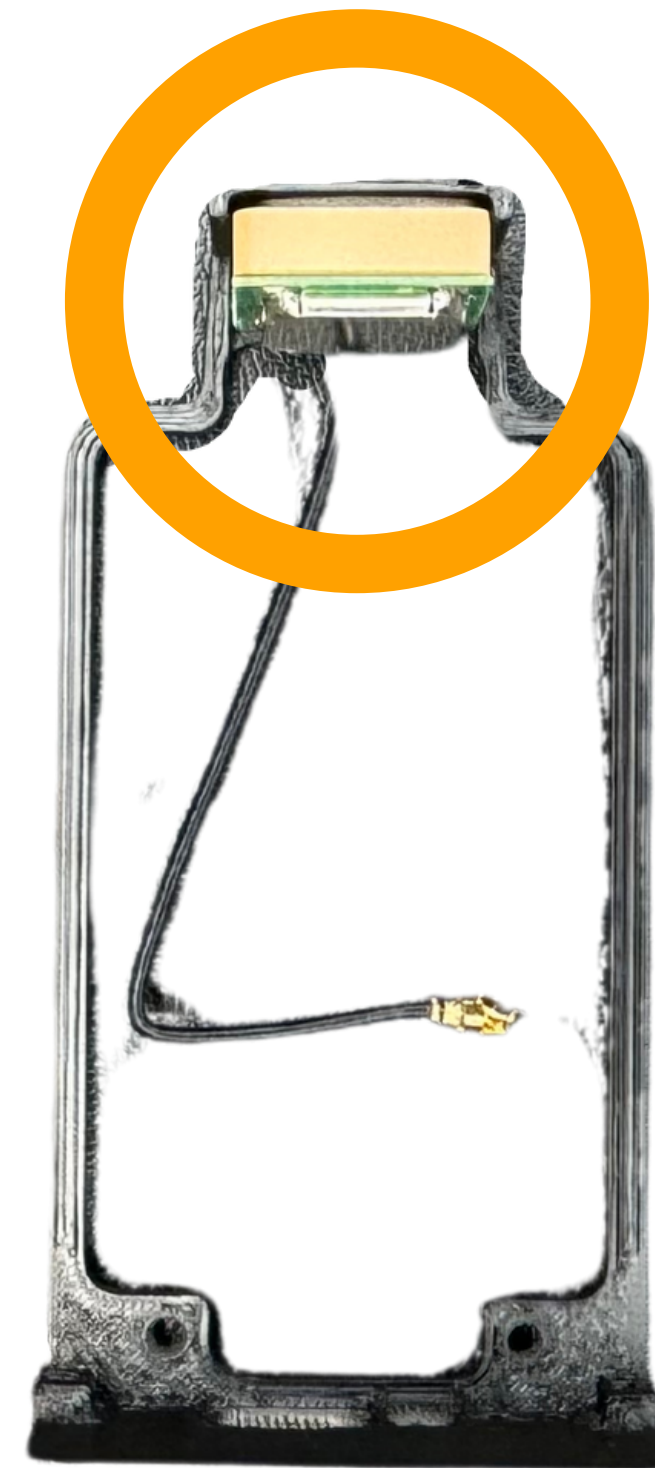


/^ESHT^ST/C

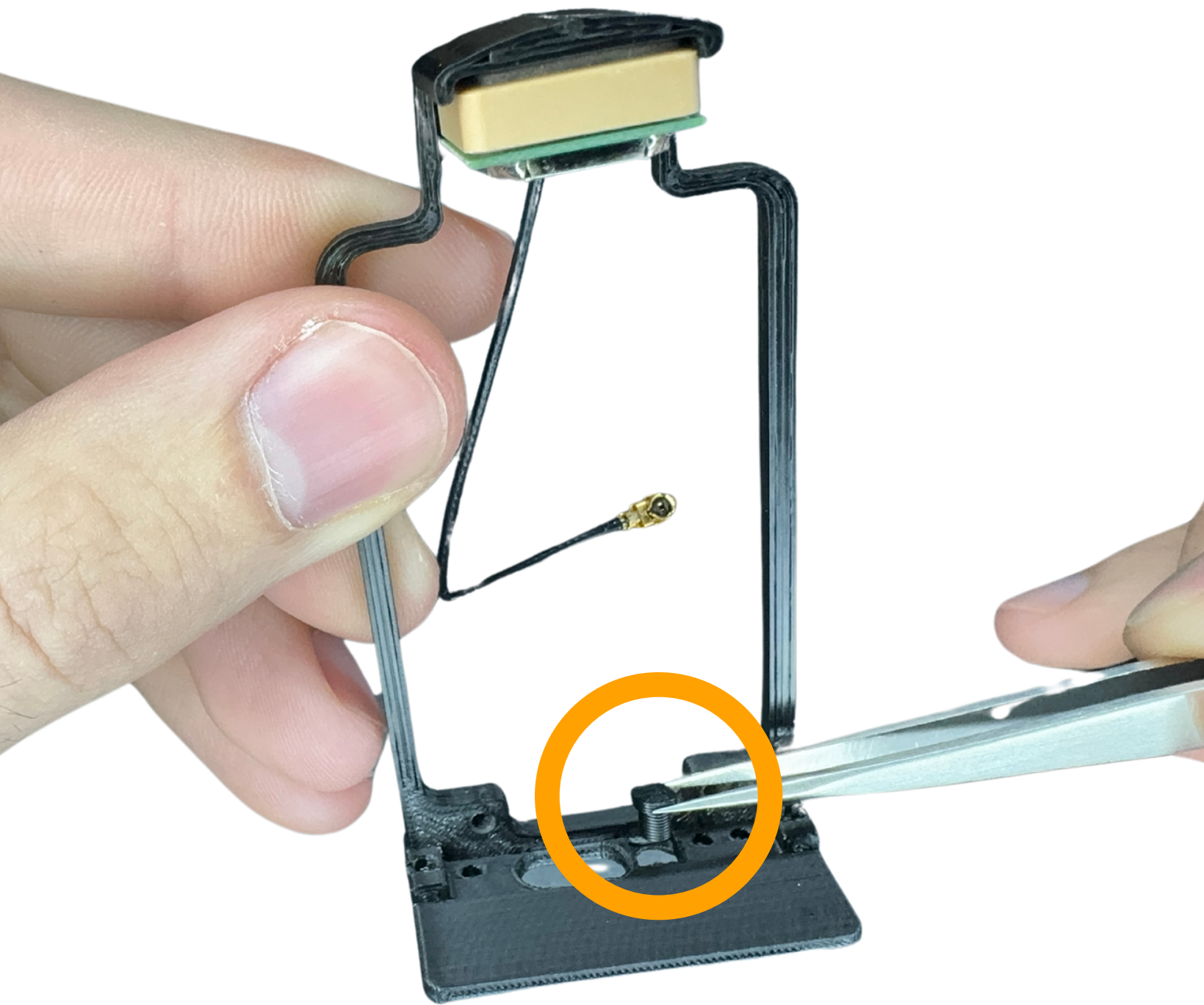




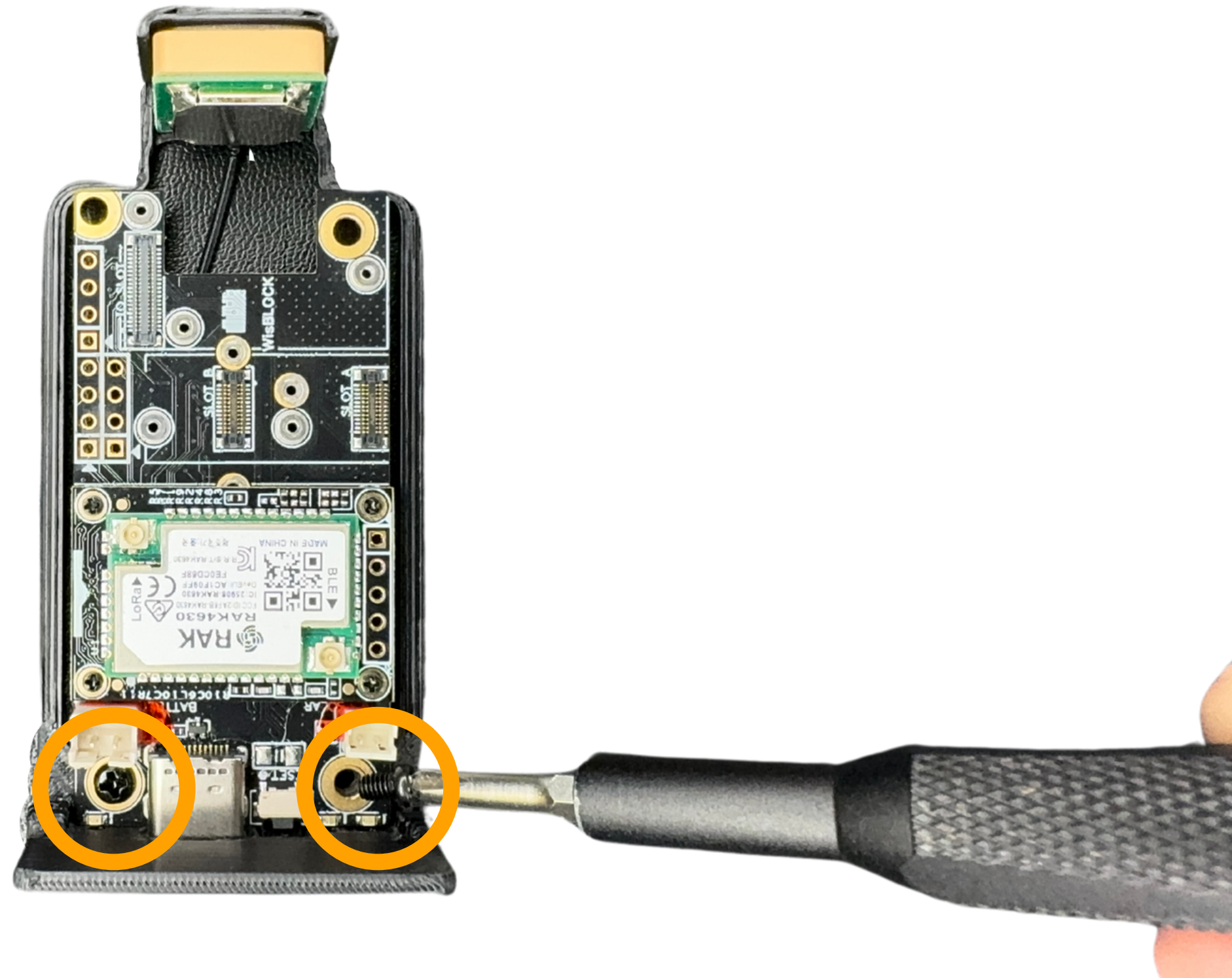
Step 1: Using the double sided adhesive mount the Bluetooth antenna in the most upper right hand corner of the sidewall



Step 2: Using double sided adhesive mount the GPS antenna in the slot at the top of the base board tray



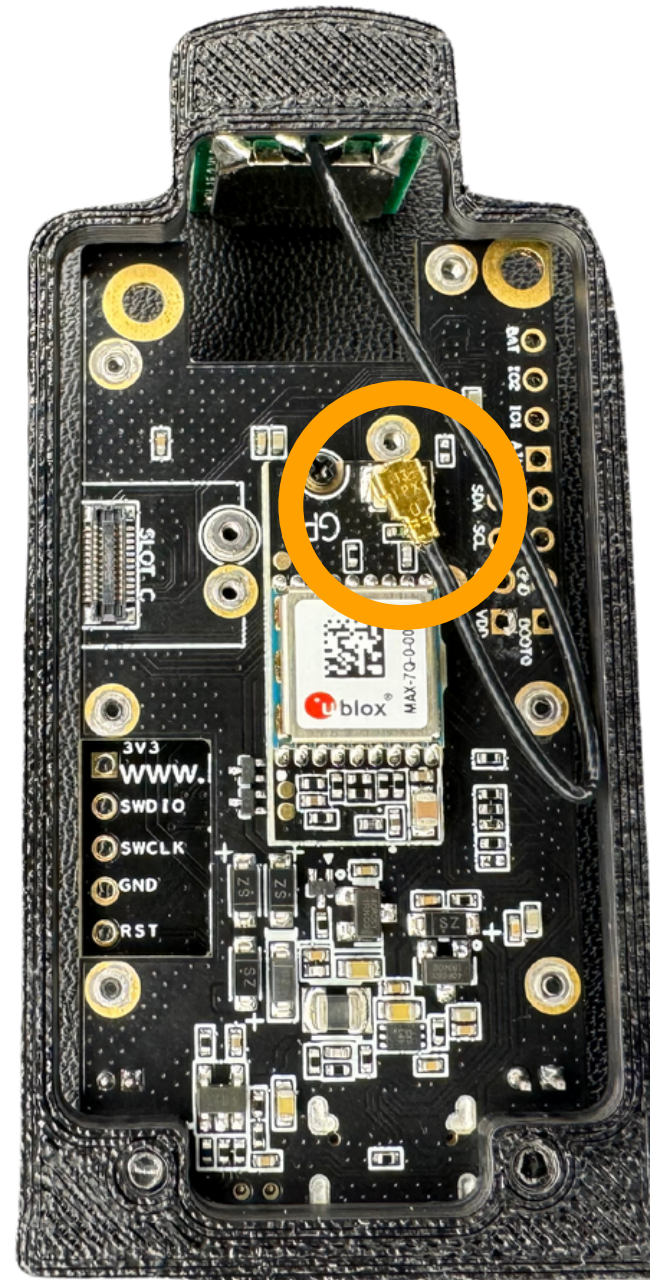
Step 3: Insert the button extension into the base board tray



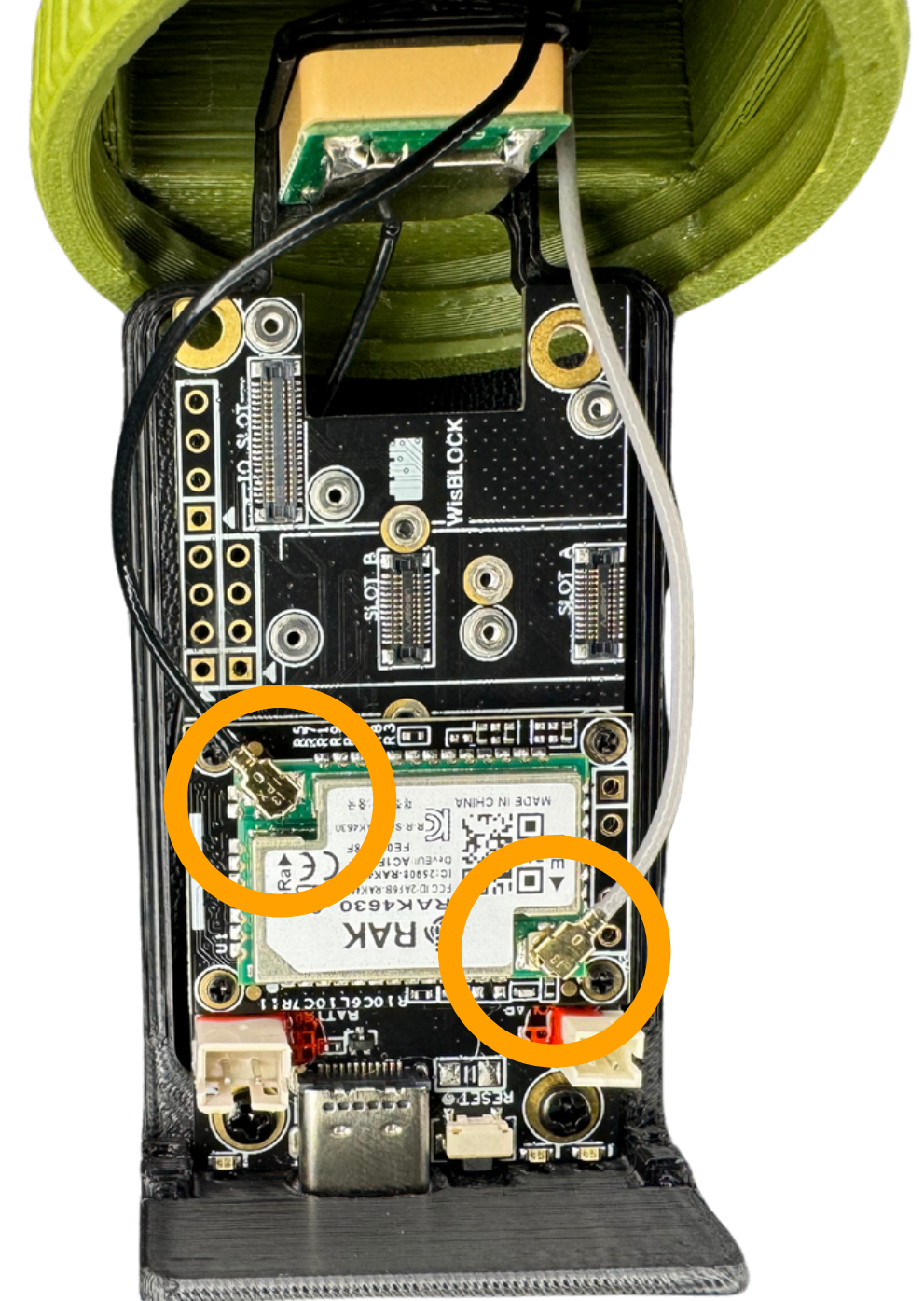
Step 4: Using the RAK Meshtastic kit hardware mounting screws, secure the RAK19007 to the base board tray



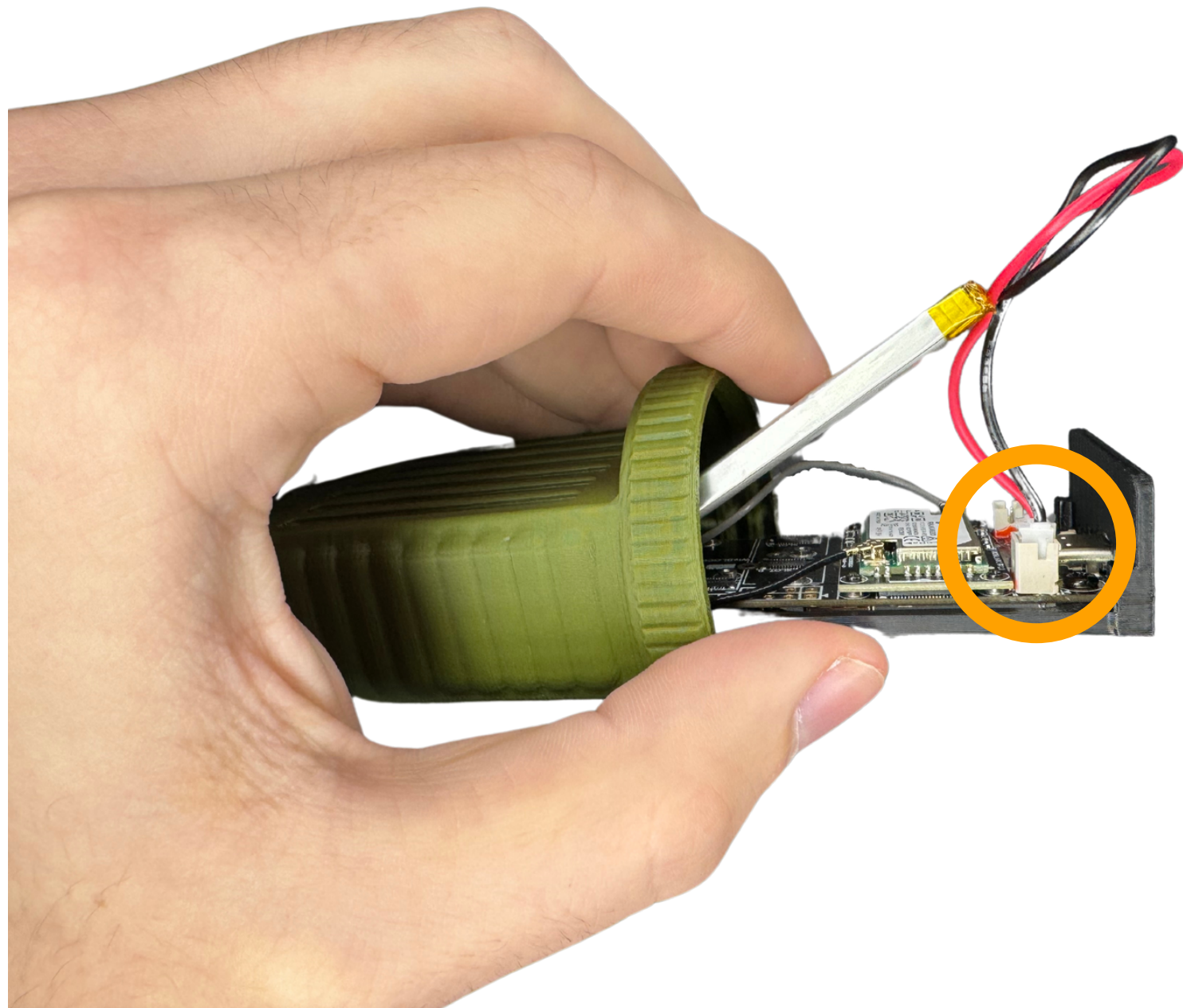
Step 5: Attach your preferred SMA antenna



Step 6: Connect the GPS IPEX connector



Step 7: Connect the LoRa and BT IPEX connectors



Step 8: Connect battery connector and lay battery on top of base board tray (secure battery with your preferred method)



Step 9: Slide the base board tray and battery into the case body



Step 10: Insert the faceplate into the case body aligning the screw holes



Step 11: Secure the faceplate and base board tray using the provided M2x16mm screws



Step 12: Complete the assembly by screwing on the case cap