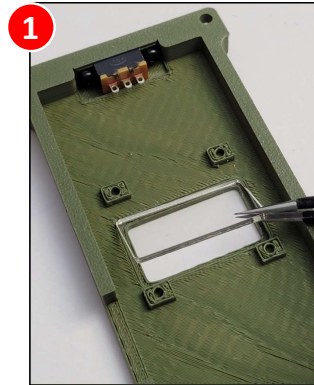


# ^ESHT^ST/C

## Case Assembly Guide

RAK19007/5005

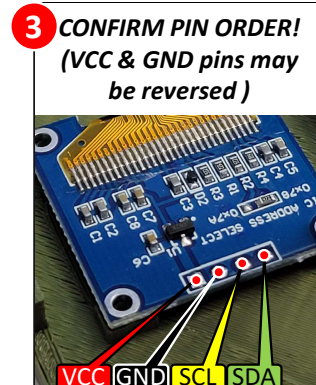
(with or without screen)



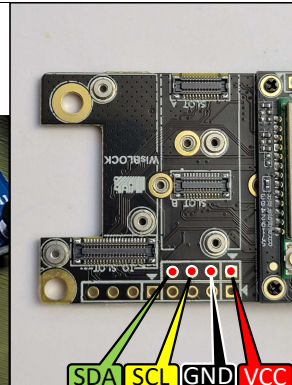
**1** Place the acrylic window in the window mount area (disregard if no screen will be installed)



**2** Mount the 0.96" OLED screen and secure with four M2x4mm screws & washers (disregard if no screen will be installed)



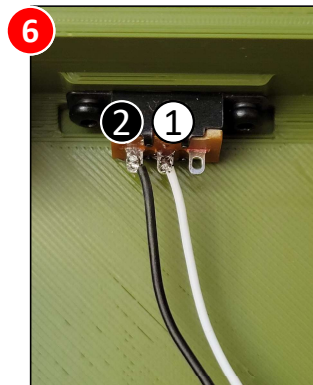
**3** CONFIRM PIN ORDER! (VCC & GND pins may be reversed)  
Solder four wires to the screen I2C pins, then solder the other ends of these four wires to the RAK19007/5005 base board as shown above



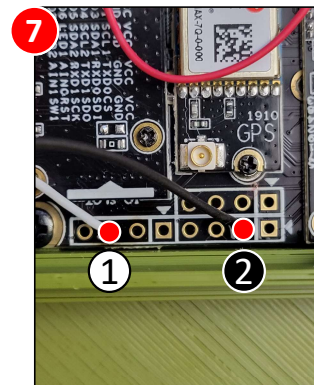
**4** Install the reset button in the cutout at the bottom of the frame



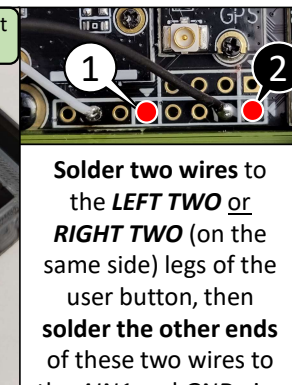
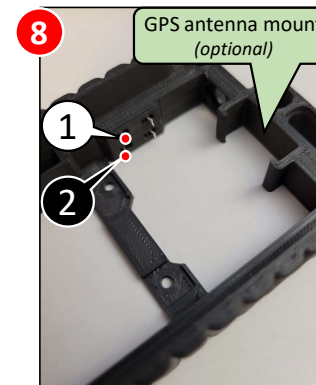
**5** Install the RAK19007/5005 board using four M2x4mm screws & four M2 nuts



**6** Solder two wires to the LEFT TWO contacts of the GPS switch



**7** Solder the other ends of these two wires to the IO.2 (1) and GND (2) pins on the RAK19007/5005 base board



**8** Solder two wires to the LEFT TWO or RIGHT TWO (on the same side) legs of the user button, then solder the other ends of these two wires to the AIN1 and GND pins on the RAK19007/5005 base board as shown above (GND can be shared with wire from step #7)



**9** Use four M3x20mm screws & nuts to secure the front and back covers of the case