

# APA-L2414

2.4~2.5GHz Directional Panel Antenna 14dBi

APA-L2414 antennas are professionally engineered and manufactured with the highest industry quality at the lowest possible price providing extreme value.

APA-L2414 is designed for the 2.4GHz ISM band, supporting 2.4 to 2.5 GHz and provides superb performance in IEEE 802.11b/g WiFi and Bluetooth applications.

APA-L2414 includes mounting bracket and hardware for up to 2" OD masts. Made with fiberglass



## Applications:

2.4 - 2.5 GHz ISM Band  
IEEE 802.11b, 802.11g, 802.11n Wireless LAN  
Directional and multipoint applications  
Bluetooth  
Public Wireless Hotspot  
WiFi, RFID  
Wireless Video Systems

## Features :

Superior performance  
The weight is light  
Good appearance designs  
DC Short lightning protection  
Installed for vertical or horizontal polarization  
Behind and support is an aluminum  
Support is up and down or so to adjust  
Outdoor antenna for public hot-spots  
Includes tilt and swivel mast mount brackets  
RoHS Compliant

<b>Model</b>	APA-L2414
<b>Frequency</b>	2.4-2.5GHz
<b>VSWR</b>	≤ 1.5
<b>Gain</b>	14dBi
<b>Polarization</b>	Vertical or Horizontal
<b>Power Handling</b>	50 Watts
<b>Impedance</b>	50 Ω
<b>Beam Width</b>	H: 30° / V: 30°
<b>Connector</b>	N Female
<b>Operation Temp</b>	-40°C ~ +80°C
<b>Dimension</b>	202*202 mm
<b>Mounting</b>	32 ~ 45 mm ( 1.2 ~1.75 inch )
<b>Weight (&amp;Mounting Bracket max)</b>	340g

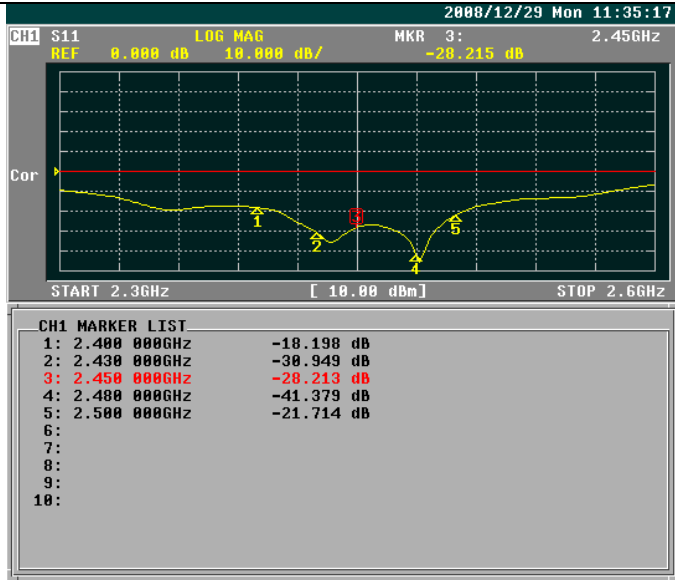
## For further details:

Alfa Network Inc.,  
4F-1 No. 106, Rueiguang Rd.,  
Neihu District,  
Taipei City, Taiwan.  
<http://www.alfa.com.tw>  
[sales@alfa.com.tw](mailto:sales@alfa.com.tw)  
Tel:+886-2-27968477  
Fax:+886-2-27968478

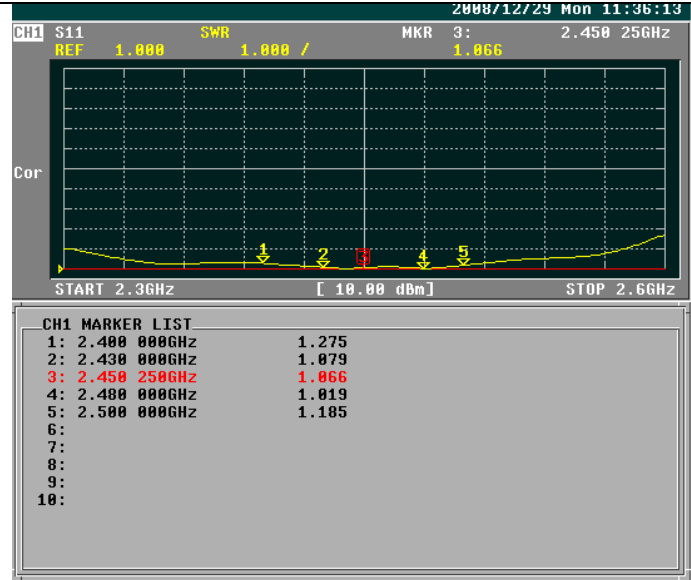
# APA-L2414

2.4~2.5GHz Directional Panel Antenna 14dBi

## Network Analyzer Test Report



Return loss

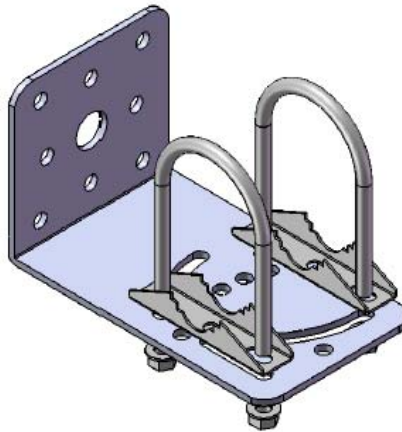
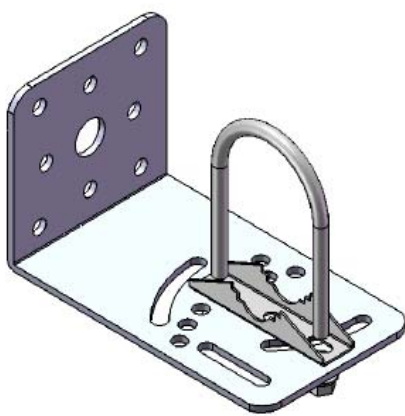
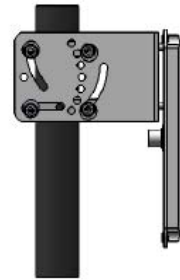
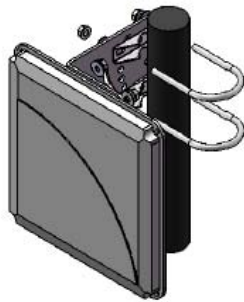
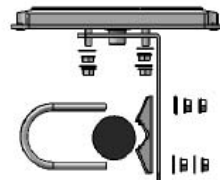
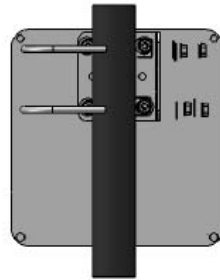
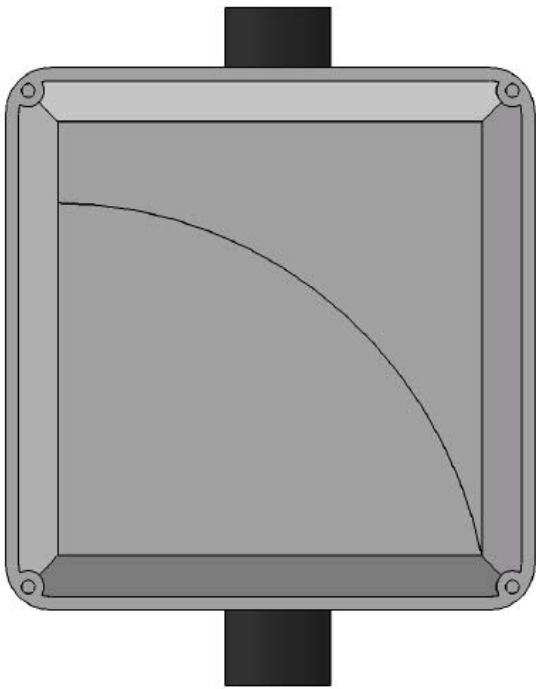


V.S.W.R

# APA-L2414

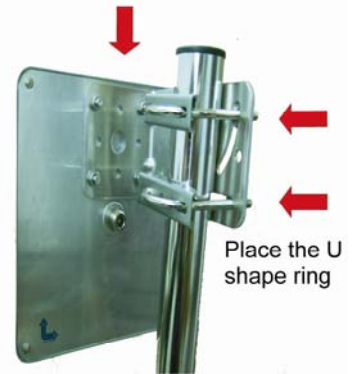
2.4~2.5GHz Directional Panel Antenna 14dBi

## Mounting Kits Install Guide



**1.**

Place the bracket



**2.**



**3.**

**Finish**

